

HOW TO FIRST TIME ACCESS YOUR COMPUTER

You can use any computer in the two buildings of College of Medicine A & B, (in the library, in the classrooms, and in the computer labs). Please follow the steps below to log in and change your password.

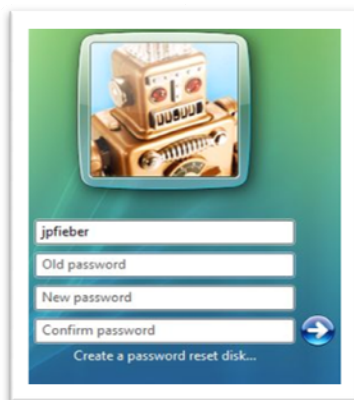
Step 1: Press the Ctrl+Alt+Delete buttons to bring up the log on screen.



Step 2: - Log on to the computer with your User name & temporary password



Step 3: - This window will open to change your password for first time.



Step 4: - Type in your temporary password, then type in your new password twice: New and Confirm New Password. (Note: password must be minimum of six digit alphanumeric characters)

Click OK to finish.

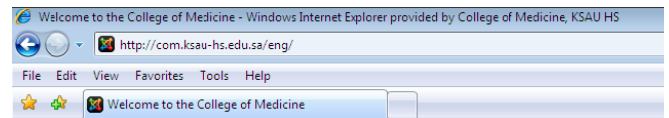
HOW TO ACCESS YOUR MAIL

You can use any computer in the two buildings of College of Medicine A & B, (in the library, in the classrooms, and in the computer labs).

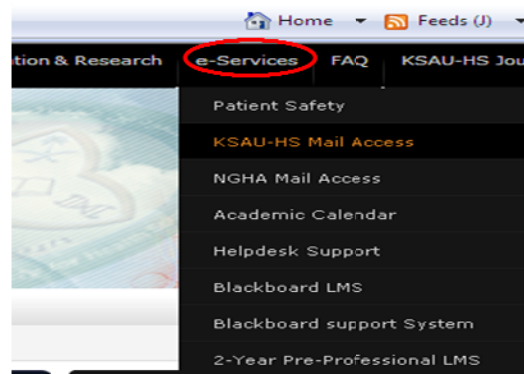
Step 1: Click on Internet Explorer on your Desktop



Step 2: Type: <http://com.ksau-hs.edu.sa/eng/> and press enter



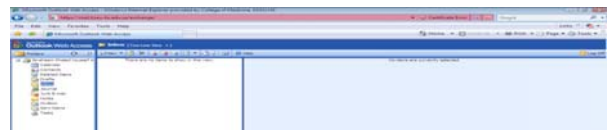
Step 3: Select KSAU-HS Mail Access under e-Services



Step 3: Type your user name & password to log into the mail.



Congrats, Your email box is open



HOW TO CONFIGURE WIRELESS NETWORK

خطوات ضبط إعدادات الشبكة
للاتصال بالشبكة اللاسلكية لكلية الطب

Wireless Network Configuration Settings

Step by Step

STEP 1

Start > Settings > Network Connection

من قائمة ابدأ < إعدادات < اتصال شبكي



STEP 2

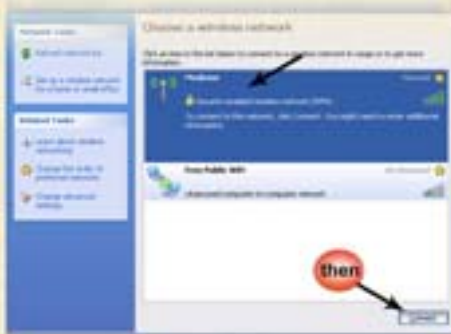
Right Click > view Available Wireless Networks

انقر بالزر الأيمن للمؤشرة < عرض الشبكات اللاسلكية المتاحة



STEP

3



Click «Medicine» Network
➤ click Connect

انقر شبكة «Medicine»
← ثم اضغط زر اتصال

STEP

4



Enter Network Key «Wppcom000»
➤ click Connect

أدخل مفتاح الدخول للشبكة
«Wppcom000» ← ثم زر اتصال

STEP

5



when done,
a notification appears
at the task bar

عند الانتهاء سيظهر تنبيهه
في شريط المهام